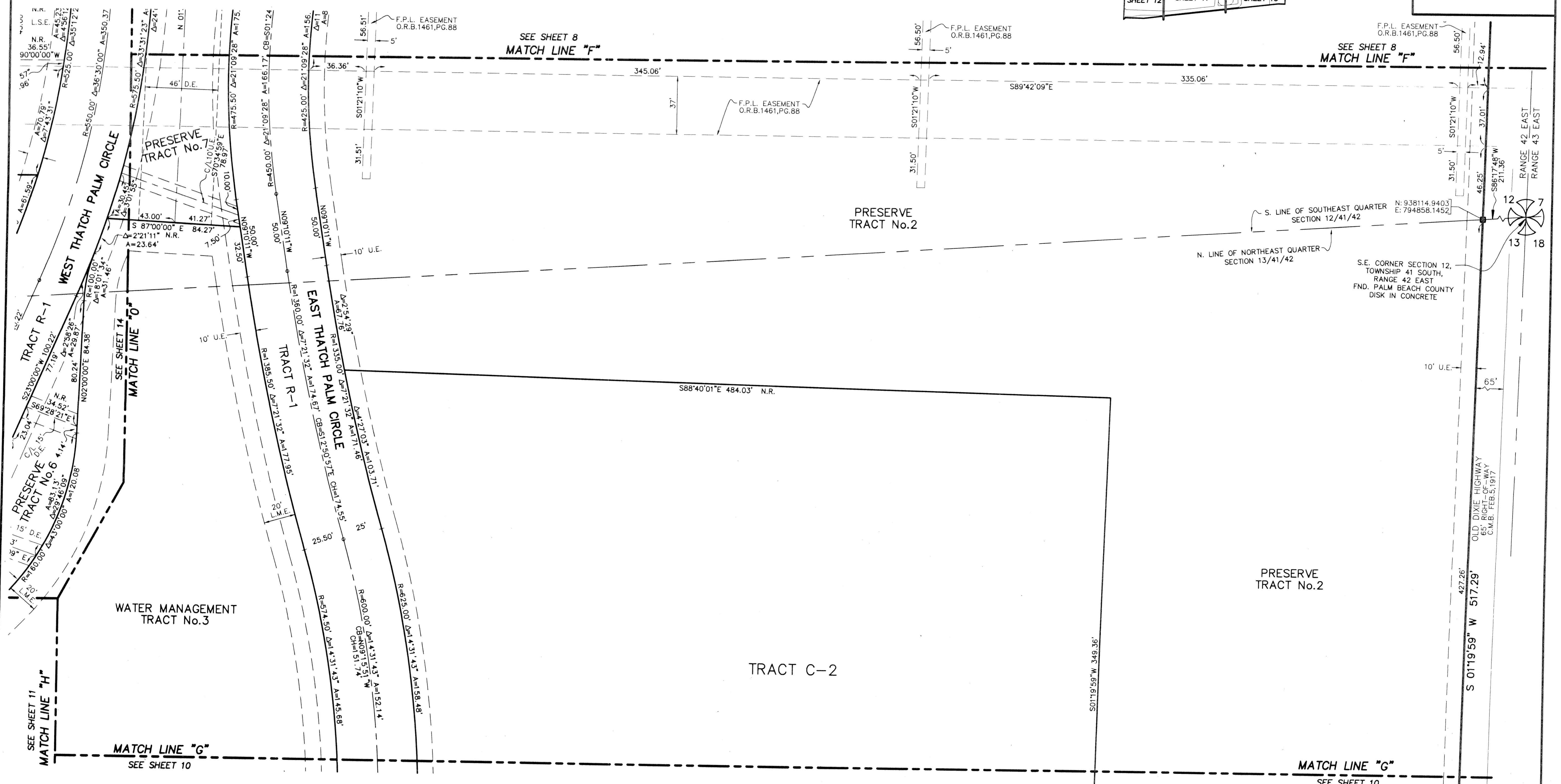
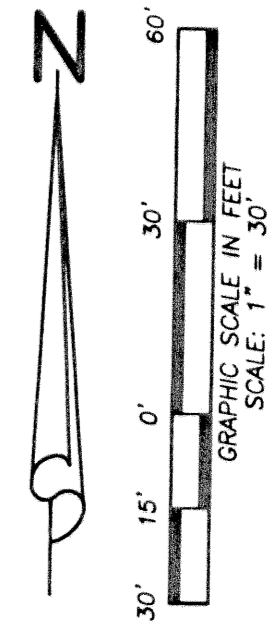
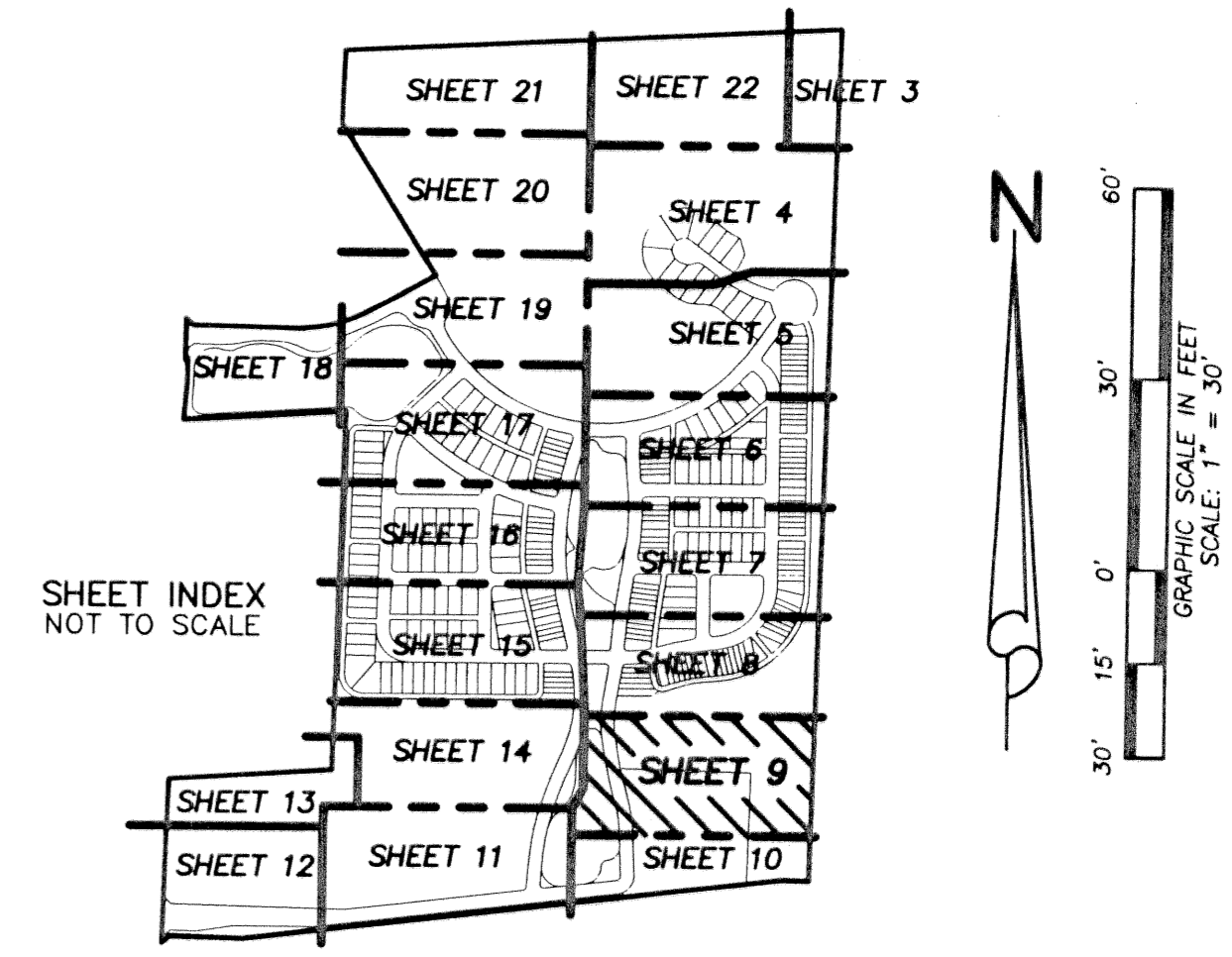


BOTANICA

BEING A PARCEL OF LAND IN SECTION 12 AND 13, TOWNSHIP 41 SOUTH,
RANGE 42 EAST, TOWN OF JUPITER, PALM BEACH COUNTY, FLORIDA.

JANUARY, 2003 SHEET 9 OF 22

36



LIDBERG LAND SURVEYING, INC.		CAD K:\AUTOCAD\98-150\1508-306.DWG	
REF K:\AUTOCAD\		JOB 98-150-306	
FLD B.D.	FB. 000	PG. 00	DATE 02-22-02
OFF W.D.J.	000	00	
CKD W.D.J.	000	00	
SHEET 9 OF 22		DWG 000-1500	

675 West Indiantown Road, Suite 200, Jupiter, Florida 33458 TEL. 561-746-8454